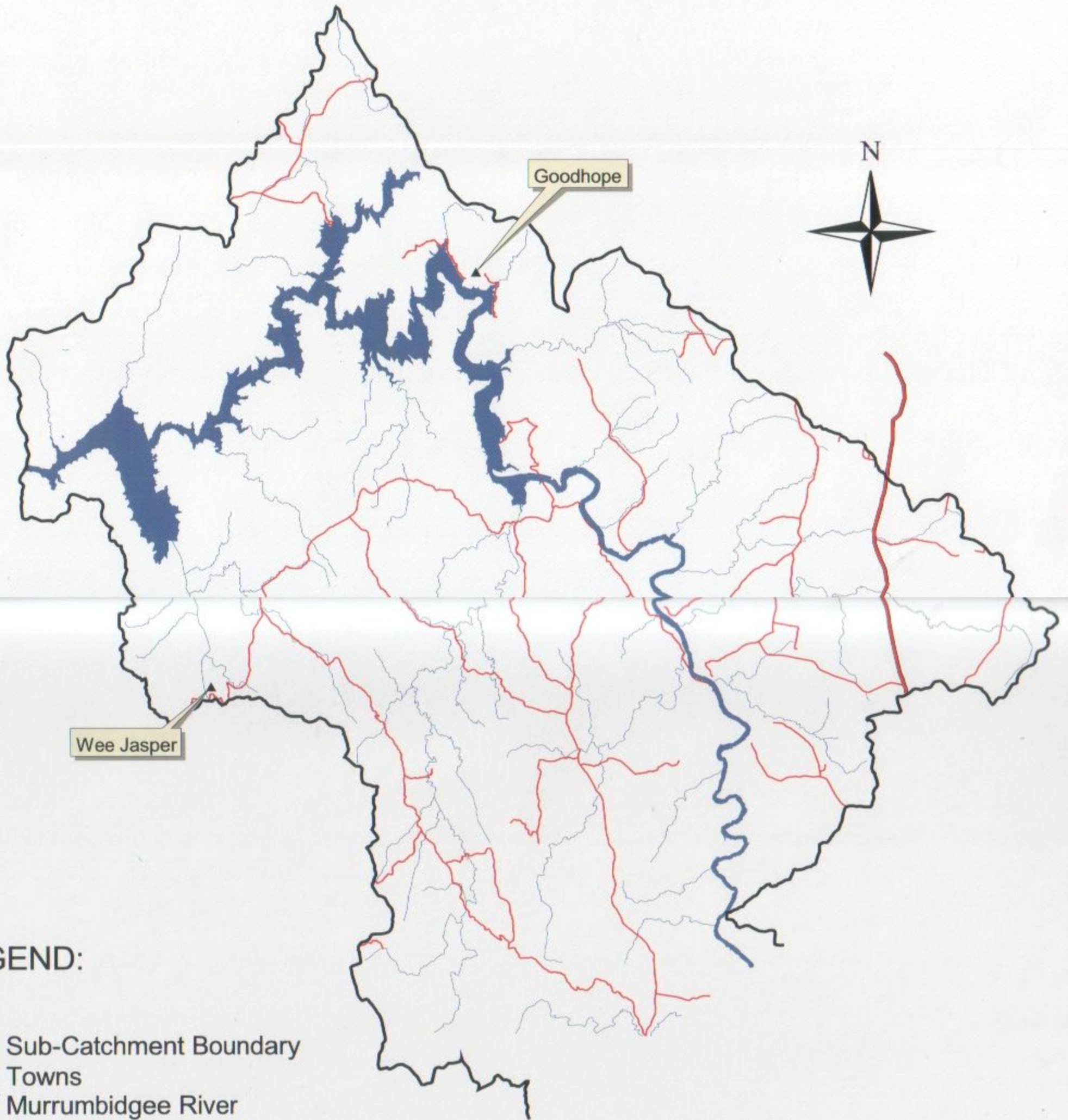


BURRINJUCK

SUB-CATCHMENT

BURRINJUCK SUB-CATCHMENT

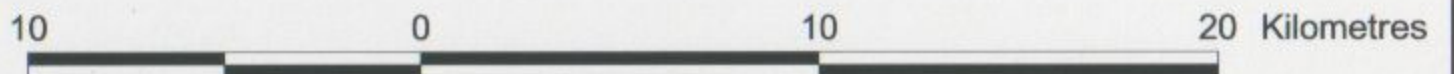
Map 13: Roads and Rivers



LEGEND:

-  Sub-Catchment Boundary
-  Towns
-  Murrumbidgee River
-  Burrinjuck Dam
-  Highways
-  Major Roads
-  Major Tributaries

SCALE: 1:200000

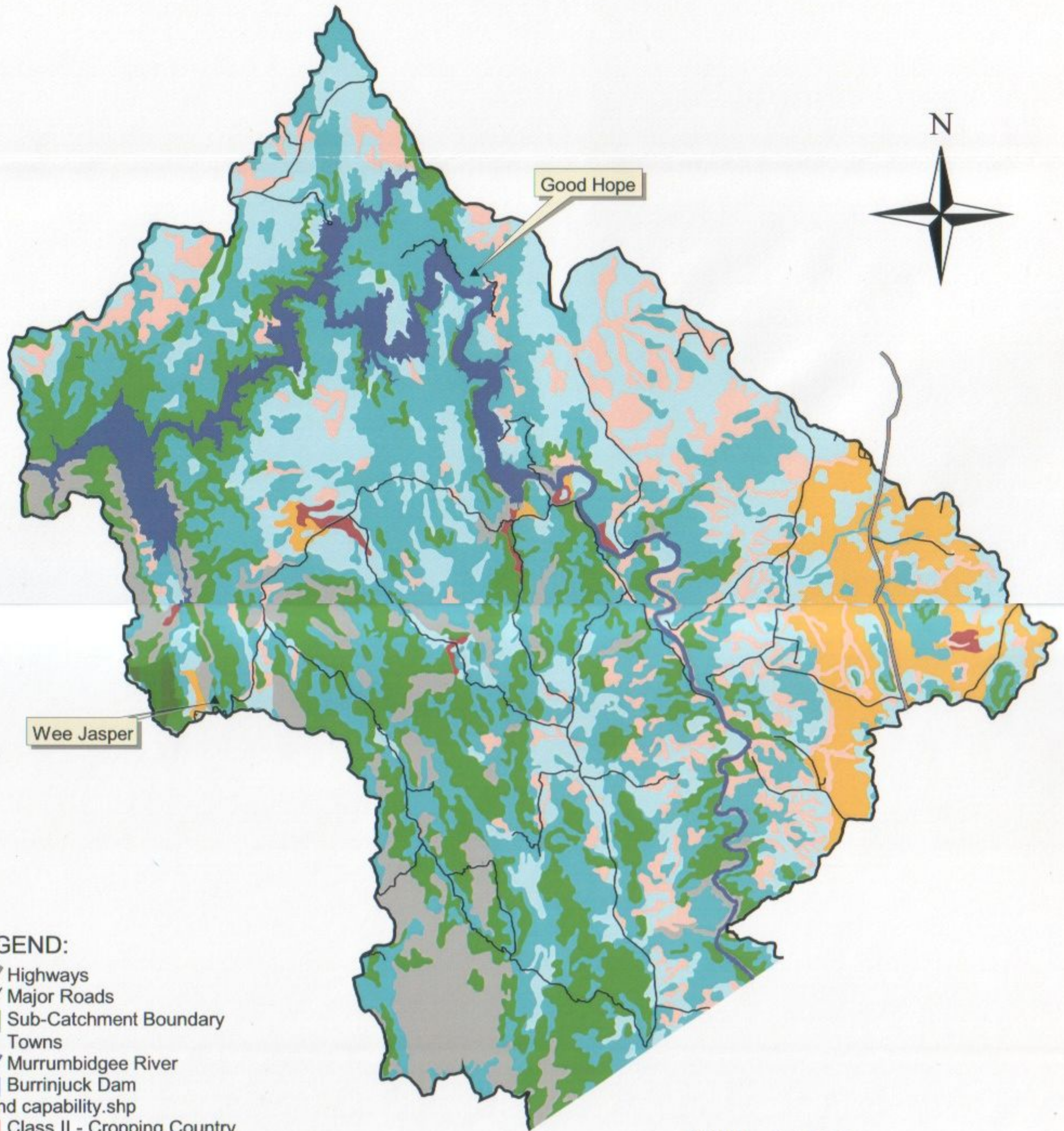


DISCLAIMER

The Yass Area Network of Landcare Groups and/or contributors accepts no responsibility for the result of action taken or decisions made on the basis of the information contained herein or for errors, omissions or inaccuracies presented here. Whilst all care is taken to ensure a high degree of accuracy, users are invited to notify of any map discrepancies.

BURRINJUCK SUB-CATCHMENT

Map 14: Land Capability



LEGEND:

- Highways
- Major Roads
- Sub-Catchment Boundary
- Towns
- Murrumbidgee River
- Burrinjuck Dam
- Bj land capability.shp

- Class II - Cropping Country
- Class III - Rotational Cropping Country
- Class IV - Occasional Cropping Country
- Class V - Moderate Grazing Country
- Class VI - Seasonal Grazing Country
- Class VII - Suited only for Green Timber
- Class VIII - Non-Agricultural Land
- Nature Reserve
- Water

SCALE 1:200000

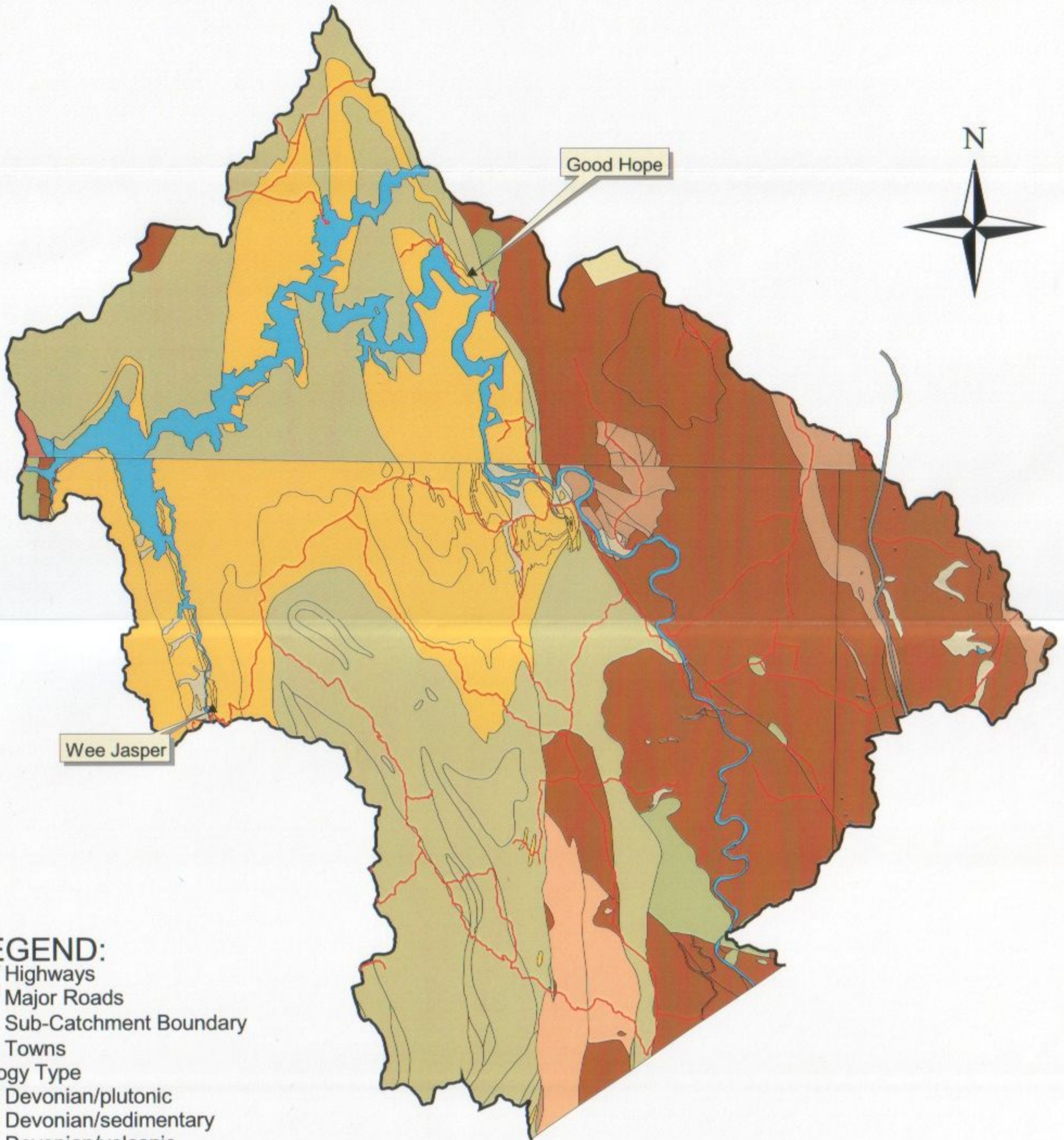
10 0 10 Kilometres

DISCLAIMER

The Yass Area Network of Landcare Groups and/or contributors accepts no responsibility for the result of action taken or decisions made on the basis of the information contained herein or for errors, omissions or inaccuracies presented here. Whilst all care is taken to ensure a high degree of accuracy, users are invited to notify of any map discrepancies.

BURRINJUCK SUB-CATCHMENT

Map 15: Geology



- LEGEND:**
- Highways
 - Major Roads
 - Sub-Catchment Boundary
 - Towns
 - Geology Type**
 - Devonian/plutonic
 - Devonian/sedimentary
 - Devonian/volcanic
 - Ordovician/sedimentary
 - Quaternary/sedimentary
 - Recent/water
 - Silurian-Devonian/sedimentary
 - Silurian/plutonic
 - Silurian/sedimentary
 - Silurian/volcanic

SCALE 1:200000

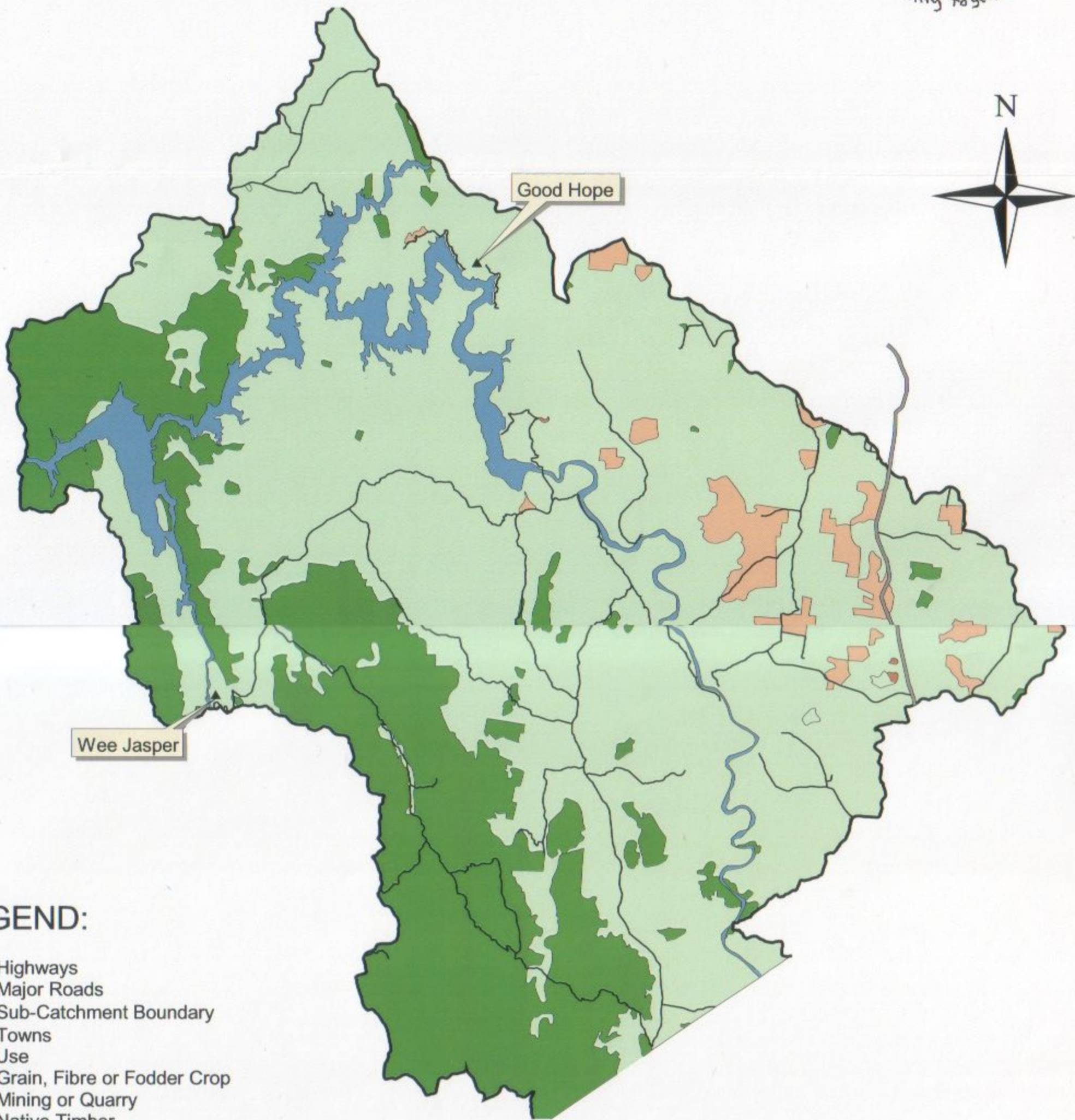


SOURCE: RACD, 1999

DISCLAIMER
 The Yass Area Network of Landcare Groups and/or contributors accepts no responsibility for the result of action taken or decisions made on the basis of the information contained herein or for errors, omissions or inaccuracies presented here. Whilst all care is taken to ensure a high degree of accuracy, users are invited to notify of any map discrepancies.

BURRINJUCK SUB-CATCHMENT

Map 16: Land Use



LEGEND:

- Highways
- Major Roads
- Sub-Catchment Boundary
- Towns
- Land Use
 - Grain, Fibre or Fodder Crop
 - Mining or Quarry
 - Native Timber
 - Native, Naturalised or Improved Pasture
 - Water Body - River, Lake, Swamp

SCALE 1:200000

10 0 10 Kilometres

DISCLAIMER
The Yass Area Network of Landcare Groups and/or contributors accepts no responsibility for the result of action taken or decisions made on the basis of the information contained herein or for errors, omissions or inaccuracies presented here. Whilst all care is taken to ensure a high degree of accuracy, users are invited to notify of any map discrepancies.

SOURCE: DLWC, 1999